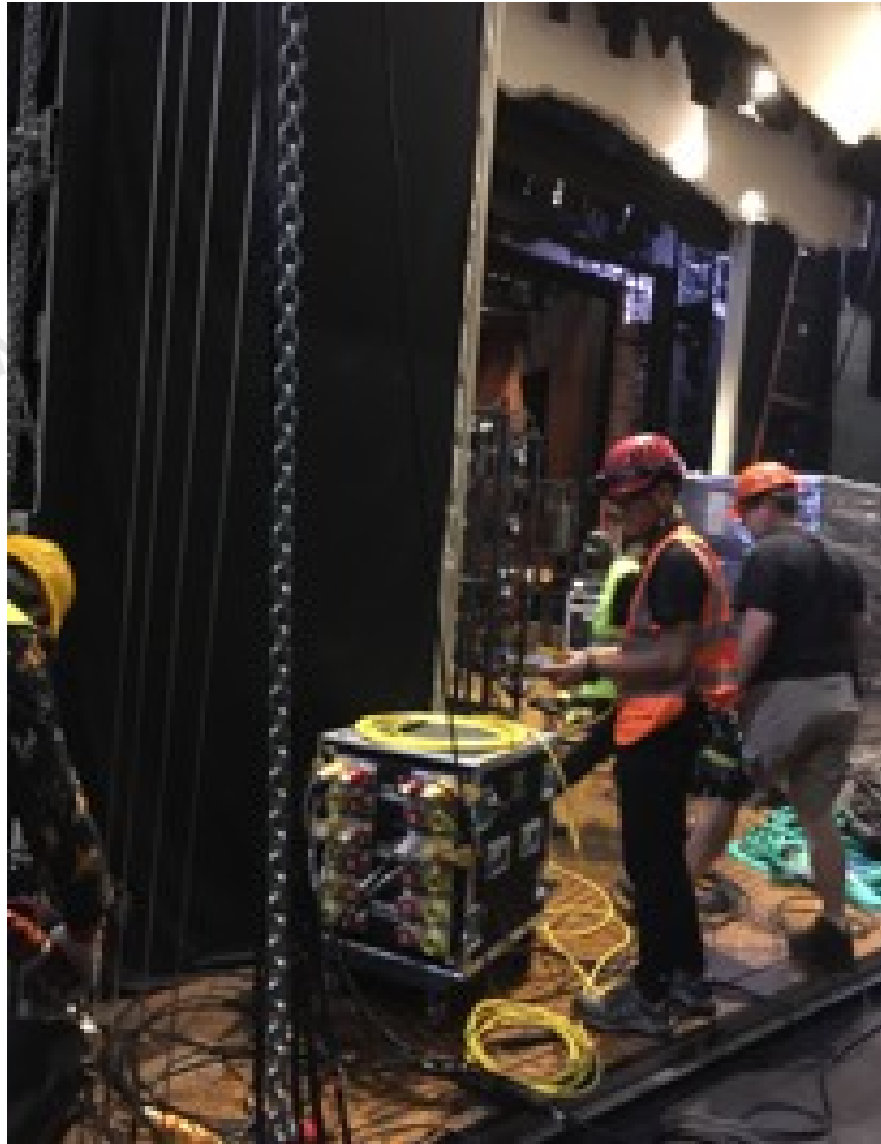




GST GEAR

Hoist Control



GLOBAL STAGE TECHS INC.

Address: 218 N. Chaparral St., Corpus Christi, Texas, USA, 78401

E-mail: usoffice@gstgr.com

Tel: +1-315-212-6238

Web: www.gstgr.com

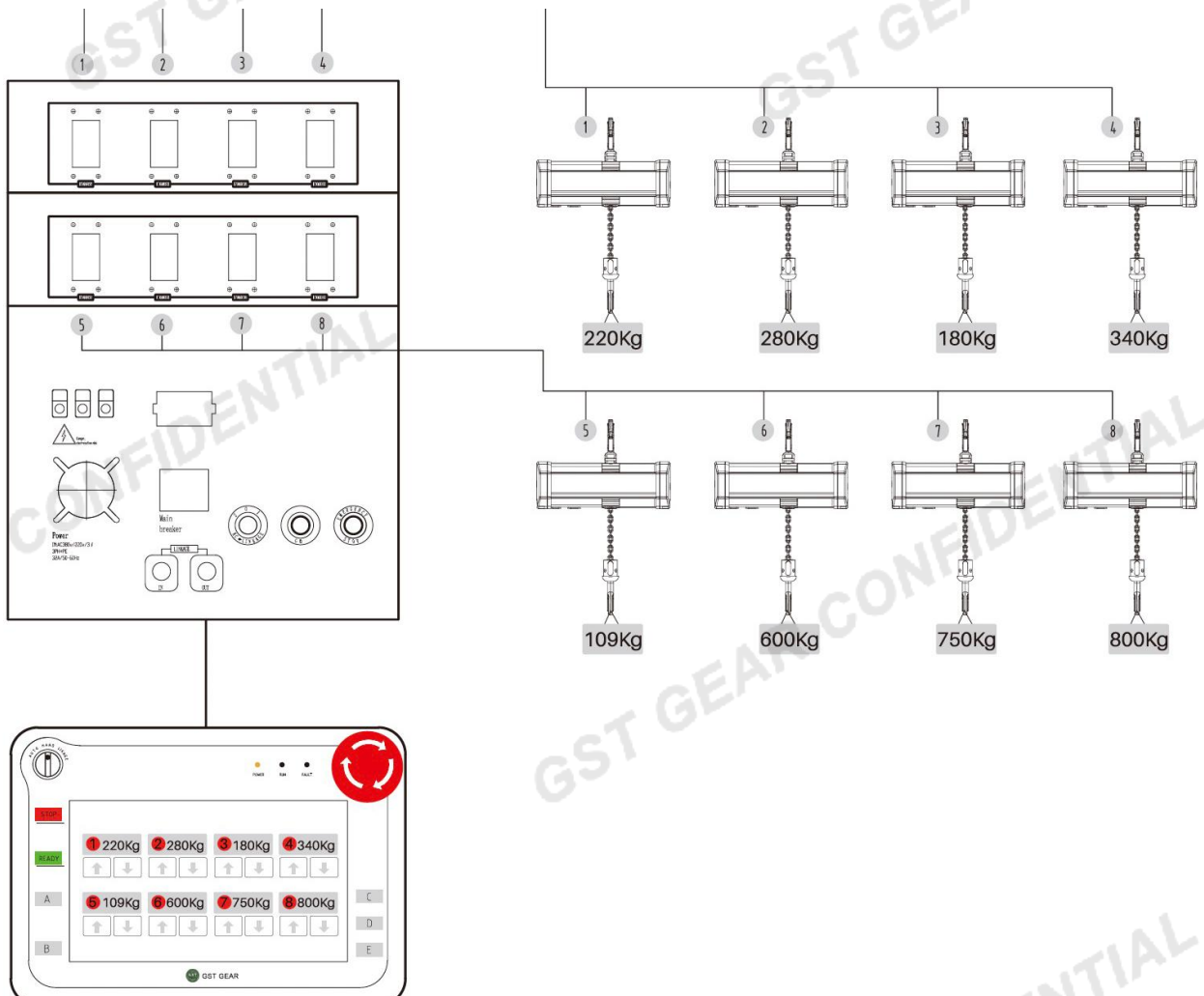


<https://www.facebook.com/profile.php?id=61553715008506>

All Rights Reserved

8 Ways V6 Hoists Intelligent Linkage Control

- In the past group control environment, we can only control multiple hoists, but it will occur many problems such as poor synchronization. The real-time load of each hoist point can only be judged by the experience of the operator, which is highly depending on the operator's operating experience, so we hope to bring a revolutionary group control device that can show the real-time synchronous of the loading through V6 built-in load monitor
- By control device with a screen display, we can achieve real-time display of the load data of multiple lifting points, which brings great significance for multi-task lifting, higher safety and much easier of using



V6-Show Control Panel

- Model: MK7-64P
- Cable specifications: Super Cat6 double shielded network cable/3*1mm² power cable
- Input voltage: 220-415V(Customizable), Single phase, 1.0KW Power
- Plug specifications: RJ45/2P/3P/USB Aviation connector
- Size: 800*600*360mm
- Net weight: 30kg
- Display screen: 17 inch, 1920*1280 Resolution
- Keys function: Emergency stop, Reset, Key access, Rocker switch



Hoist Drive Box



- Model: MD8-1P
- Manual up and down buttons: Yes
- Emergency stop and reset buttons: Yes
- 3 Colors light for running error showing
- Fixing method: Lighting clamps 48-51mm
- Plug specification: RJ45/4P Industrial plug/20P Heavy
- Size: 510*360*170mm
- Net weight: 18kg

32A Power Box

- Model: MF9-1 to 6 multi box 32A
- Emergency stop main power: No
- Fixing method: Lighting clamps 48-51mm
- Plug specification: 32A/16A Industrial plug
- Size: 480*210*150mm
- Net weight: 5kg



100A Power Box



- Model: MF9-1 to 6 multi box 100A
- Emergency stop main power: Yes
- Fixing method: Lighting clamps 48-51mm
- Plug specification: 63A/32A Industrial plug
- Size: 480*240*170mm
- Net weight: 6kg

Group Controller

- Mode controllers are generally 4-way, 8-way, 12-way, 24-way, 36-way, flight case controller, portable controller. V6 controller and V6 + controller. Flight case or vertical control cabinet of corresponding size according to different models. The Mode controller only needs one button to control the single action or group linkage of the electric hoist. Each controller has an electric hoist pre-set system with panel/remote control as standard device. Mode electric hoist has many functions, such as low voltage control, adjustable limit switch and motor overheat protection, etc., which can be operated by this controller with only one power cable. The Mode controller can be connected to a component control system and can control up to 40 pcs electric hoists



Flight Case Controller



Portable Controller



V6 Controller



Wall-mounted Controller